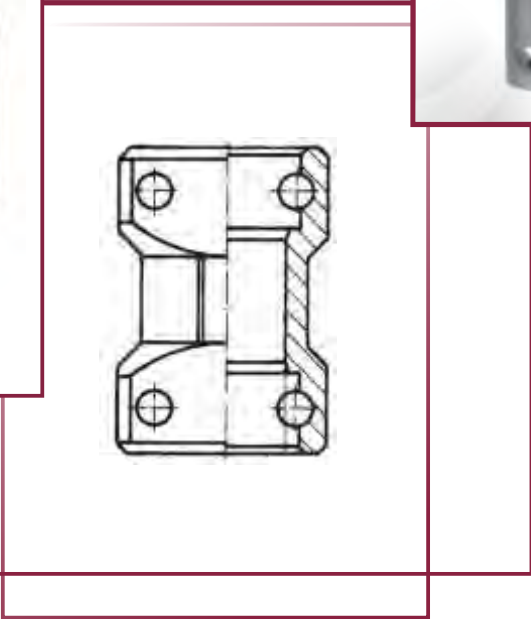
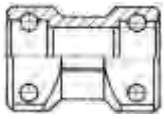


# STECKO



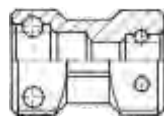
144  
strona/page

ZG- \_ \_



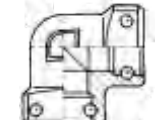
144  
strona/page

ZGR- \_ \_



145  
strona/page

ZGK- \_ \_



145  
strona/page

ZGWK- \_ \_



146  
strona/page

ZW- \_ \_



146  
strona/page

ZWR- \_ \_



147  
strona/page

ZGWR- \_ \_



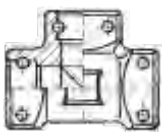
147  
strona/page

ZWR- \_ \_



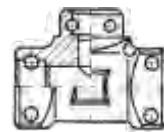
148  
strona/page

ZGT- \_ \_



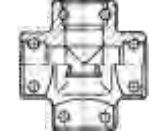
148  
strona/page

ZGTR- \_ \_



149  
strona/page

ZGC- \_ \_



149  
strona/page

P- \_



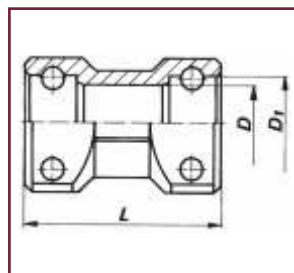
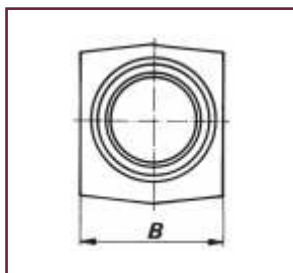


ZG-\_\_-\_\_

**Złączka gniazdowa**  
Straight staple female adaptor

Ciężnienie Pressure (bar)	Wielkość Size	D	D1	L	B	Waga Weight	ZG-__-__
		mm				kg	
500	4/6	10	15	55	27	0,185	ZG-04-04
500	8/10	14	20	55	27	0,146	ZG-06-06
420	12	18	24	55	32	0,255	ZG-08-08
350	20	24	29	58	36	0,270	ZG-12-12
275	25	31	39	75	50	0,713	ZG-16-16
200	32	38	46	75	55	0,795	ZG-20-20

**Złączka gniazdowa**  
Straight staple female adaptor



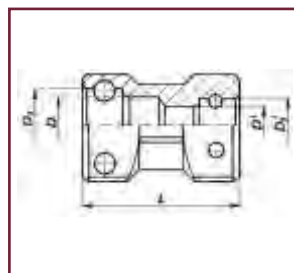
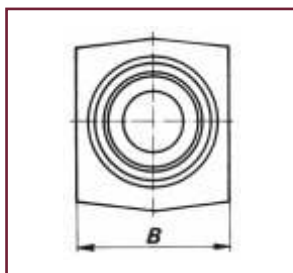
ZG-\_\_-\_\_

ZGR-\_\_-\_\_

**Złączka gniazdowa- redukcyjna**  
Reducing staple female adaptor

Ciężnienie Pressure (bar)	Wielkość Size	D	D1	D'	D'1	L	B	Waga Weight	ZGR-__-__
		mm						kg	
420	12/10	18	24	14	20	55	32	0,310	ZGR-08-06
350	20/12	24	29	18	24	58	36	0,705	ZGR-12-08
275	25/20	31	39	24	29	75	50	0,755	ZGR-16-12
200	32/25	38	46	31	39	75	55	0,810	ZGR-20-16

**Złączka gniazdowa- redukcyjna**  
Reducing staple female adaptor



ZGR-\_\_-\_\_

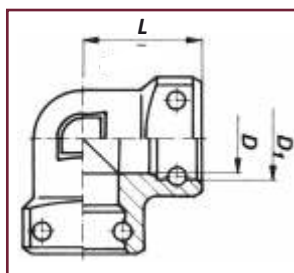
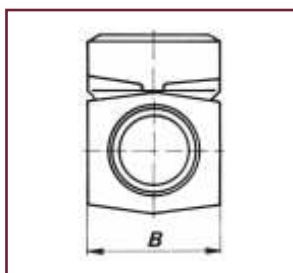


ZGK-\_\_-\_\_

**Złączka gniazdowa, kątowna 90°**  
 Elbow 90° female adaptor

Ciśnienie Pressure (bar)	Wielkość Size	D	D1	L	B	Waga Weight	ZGK-__-__
		mm					
500	8/10	14	20	55	27	0,146	ZGK-06-06
420	12	18	24	55	32	0,255	ZGK-08-08
350	20	24	29	58	36	0,270	ZGK-12-12
275	25	31	39	75	50	0,713	ZGK-16-16
200	32	38	46	75	55	0,795	ZGK-20-20

**Złączka gniazdowa, kątowna 90°**  
 Elbow 90° female adaptor



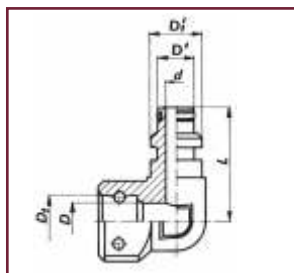
ZGK-\_\_-\_\_

ZGWK-\_\_-\_\_

**Złączka gniazdowo- wtykowa, kątowna 90°**  
 Elbow 90° staple male/ female adaptor

Ciśnienie Pressure (bar)	Wielkość Size	D	D1	L	B	Waga Weight	ZGWK-__-__
		mm					
500	6	-	15	-	-	0,185	ZGWK-04-04
500	10	-	20	-	-	0,146	ZGWK-06-06
420	12	18	24	55	32	0,255	ZGWK-08-08
350	20	24	29	58	36	0,470	ZGWK-12-12
275	25	31	39	75	50	0,713	ZGWK-16-16
200	32	38	46	75	55	0,795	ZGWK-20-20

**Złączka gniazdowo- wtykowa, kątowna 90°**  
 Elbow 90° staple male/ female adaptor



ZGWK-\_\_-\_\_



ZW-\_\_-\_\_

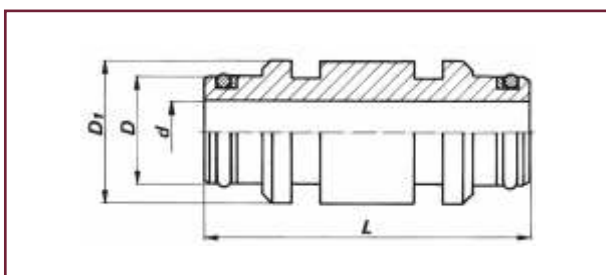
**Złączka wtykowa**

Straight staple male adaptor

Ciężnienie Pressure (bar)	Wielkość Size	D	D1	d	L	Waga Weight	ZW-__-__
		mm					
500	4/6	10	15	4	58	0,065	ZW-04-04
500	8/10	14	20	8	38	0,070	ZW-06-06
420	12	18	24	11	58	0,078	ZW-08-08
350	20	24	29	17	58	0,123	ZW-12-12
275	25	31	39	23	70	0,265	ZW-16-16
200	32	38	46	30	70	0,356	ZW-20-20

**Złączka wtykowa**

Straight staple male adaptor



ZW-\_\_-\_\_

ZWR-\_\_-\_\_

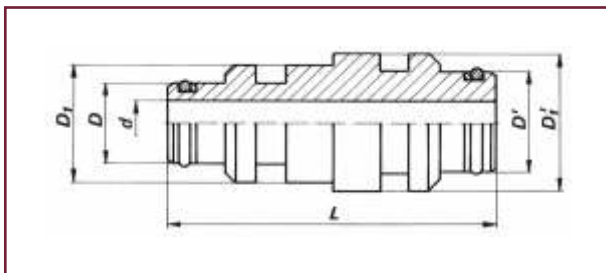
**Złączka wtykowa- redukcyjna**

Reducing staple male adaptor

Ciężnienie Pressure (bar)	Wielkość Size	D	D1	D'	D'1	d	L	Waga Weight	ZWR-__-__
		mm							
500	8/10 - 4/6	10	15	14	20	4	58	0,110	ZWR-06-04
420	12 - 8/10	14	20	18	24	8	58	0,125	ZWR-08-06
350	20/12	18	24	24	29	11	58	0,140	ZWR-12-08
275	25/12	18	24	31	39	11	64	0,270	ZWR-16-08
275	25/20	24	29	31	39	17	64	0,251	ZWR-16-12
200	32/20	24	29	38	46	17	64	0,370	ZWR-20-12
200	32/25	31	39	38	46	23	70	0,380	ZWR-20-16

**Złączka wtykowa- redukcyjna**

Reducing staple male adaptor



ZWR-\_\_-\_\_

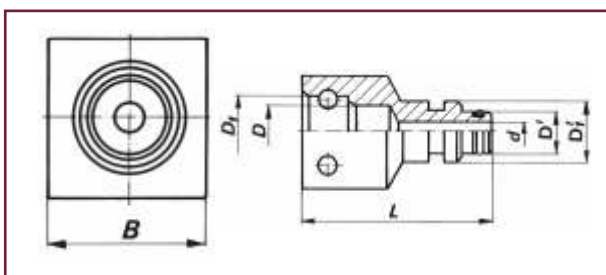


**ZGWR-\_\_-\_\_**

**Złączka gniazdowo- wtykowa, redukcyjna**  
 Reducing staple male/ female adaptor

Ciężnienie Pressure (bar)	Wielkość Size	D	D1	D'	D'1	d	L	B	Waga Weight	ZGWR-__-__
		mm								
500	8/10 - 4/6	10	15	14	20	8	55	27	0,160	ZGWR-06-04
420	8/10 - 12	14	20	18	24	11	56	30	0,185	ZGWR-06-08
420	12 - 8/10	18	24	14	20	8	62	36	0,255	ZGWR-08-06
275	25/20	24	39	24	29	15	70	50	0,471	ZGWR-16-12
200	32/25	38	46	31	39	30	75	55	0,584	ZGWR-20-16

**Złączka gniazdowo- wtykowa, redukcyjna**  
 Reducing staple male/ female adaptor



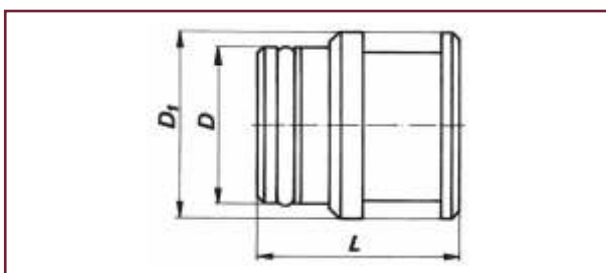
ZGWR-\_\_-\_\_

**KW-\_\_**

**Zaślepka wtykowa**  
 Staple male and plug

Ciężnienie Pressure (bar)	Wielkość Size	D	D1	L	Waga Weight	KW-__
		mm				
500	4/6	10	15	31	0,020	KW-04
500	8/10	14	20	31	0,048	KW-06
420	12	18	24	31	0,076	KW-08
350	20	24	29	31	0,100	KW-12
275	25	31	39	37	0,257	KW-16
200	32	38	46	37	0,333	KW-20

**Zaślepka wtykowa**  
 Staple male and plug



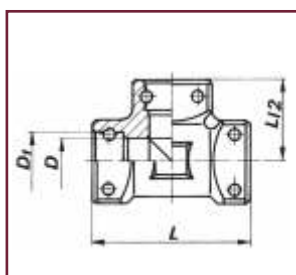
KW-\_\_

ZGT-\_\_-\_\_

**Trójnik gniazdowy**  
 T Piece female adaptor

Ciśnienie Pressure (bar)	Wielkość Size	D	D1	L	B	Waga Weight	ZGT-__-__
		mm					
500	4/6	10	15	75	27	0,383	ZGT-04-04
	8/10	14	20	75	27	0,315	ZGT-06-06
420	12	18	24	75	32	0,452	ZGT-08-08
350	20	24	29	80	36	0,479	ZGT-12-12
275	25	31	39	105	50	1,213	ZGT-16-16
200	32	38	46	110	55	1,532	ZGT-20-20

**Trójnik gniazdowy**  
 T Piece female adaptor



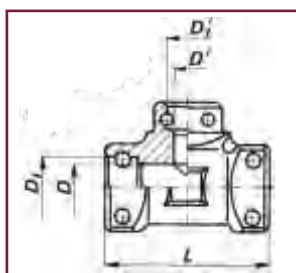
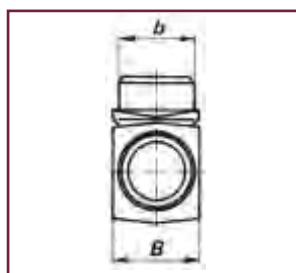
ZGT-\_\_-\_\_

ZGTR-\_\_-\_\_-\_\_

**Trójnik gniazdowy- redukcyjny**  
 Reducing T piece staple female adaptor

Ciśnienie Pressure (bar)	Wielkość Size	D	D1	D'	D'1	L	B	b	Waga Weight	ZGTR-__-__-__
		mm								
420	12-10-12	18	24	14	20	75	32	30	0,474	ZGTR-08-06-08
350	20-10-20	24	29	14	20	80	36	30	0,515	ZGTR-12-06-12
275	25-10-25	31	39	14	20	105	50	30	1,308	ZGTR-16-06-16
200	32-10-32	38	46	14	20	110	55	30	1,675	ZGTR-20-06-20
350	20-12-20	24	29	18	24	80	36	35	0,525	ZGTR-12-08-12
275	25-12-25	31	39	18	24	105	50	35	1,302	ZGTR-16-08-16
200	32-12-32	38	46	18	24	110	55	35	1,450	ZGTR-20-08-20
350	12-20-12	18	24	24	29	80	36	41	0,550	ZGTR-08-12-08
275	25-20-25	31	39	24	29	105	50	41	1,285	ZGTR-16-12-16
200	32-20-32	38	46	24	29	110	55	41	1,876	ZGTR-20-12-20
200	32-25-32	38	46	31	39	110	55	55	1,608	ZGTR-20-16-20

**Trójnik gniazdowy- redukcyjny**  
 Reducing T piece staple female adaptor



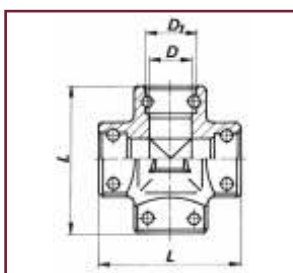
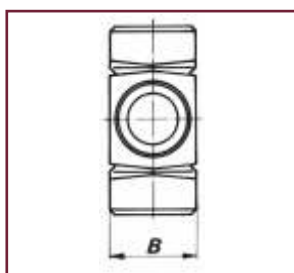
ZGTR-\_\_-\_\_-\_\_

**ZGC-\_\_-\_\_**

**Czwórnik gwintowy**  
 Cross piece staple female adaptor

Ciężnienie Pressure (bar)	Wielkość Size	D	D1	L	B	Waga Weight	ZGC-__-__
		mm					
500	4/6	10	15	75	27	0,510	ZGC-04-04
500	8/10	14	20	75	27	0,438	ZGC-06-06
420	12	18	24	75	32	0,588	ZGC-08-08
350	20	24	29	80	36	0,594	ZGC-12-12
275	25	31	39	105	50	1,338	ZGC-16-16
200	32	38	46	110	55	1,692	ZGC-20-20

**Czwórnik gwintowy**  
 Cross piece staple female adaptor



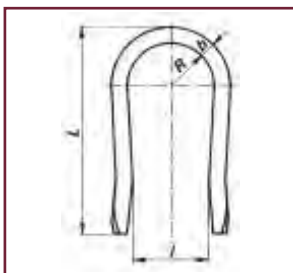
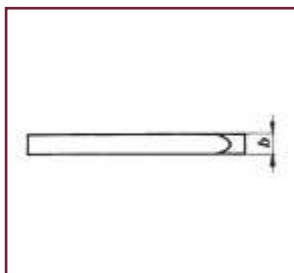
ZGC-\_\_-\_\_

**P-\_\_**

**Przetyczka**  
 Standard staple

Wielkość Size	b	R	L	l	Waga Weight	P-__
	mm					
4/6	4	4,5	38	7,5	0,009	P-04
8/10	4	7	42	12,5	0,011	P-06
12	4	9	48	16,5	0,012	P-08
20	4	11,5	55	21	0,014	P-12
25	6	15	74	27,5	0,045	P-16
32	6	18,5	83	36,5	0,050	P-20

**Przetyczka**  
 Standard staple



P-\_\_