

BB20 da 1 a 6 leve

BB20 from 1 to 6 levers

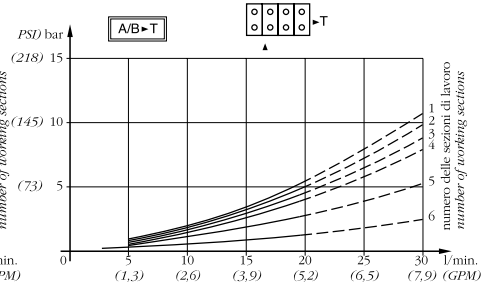
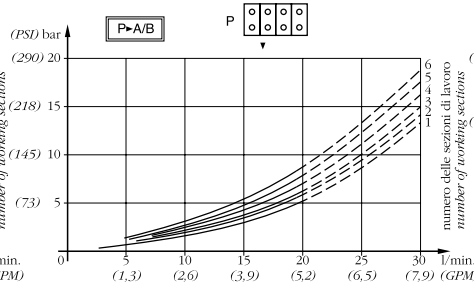
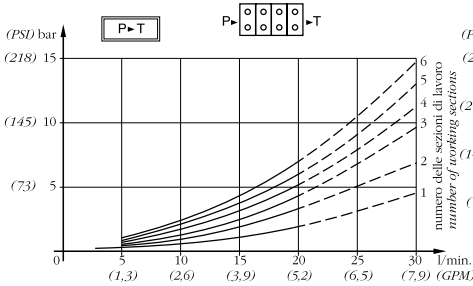
Caratteristiche generali / Technical characteristics		
	l/min	GPM
• Portata nominale / Nominal flow	17	4,5
• Portata limite / Max flow	25	6,6
	bar	PSI
• Pressione nominale / Nominal pressure	250	3600
• Pressione max sugli utilizzi / Max pressure on ports	320	4700
• Contropressione max allo scarico / Max pressure in tank-line	80	1100



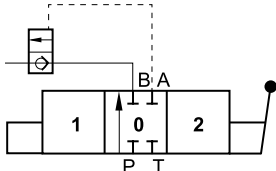
P>T - TEMPERATURA OLIO 50°C - VISCOSITÀ 3,5°E

P>A/B - TEMPERATURA OLIO 50°C - VISCOSITÀ 3,5°E

A/B>T - TEMPERATURA OLIO 50°C - VISCOSITÀ 3,5°E

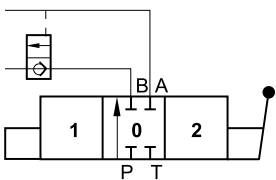


VBS



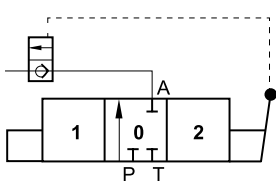
Valvola di blocco per sezione semplice effetto
Pilot operated check valves for simple acting section

VBD

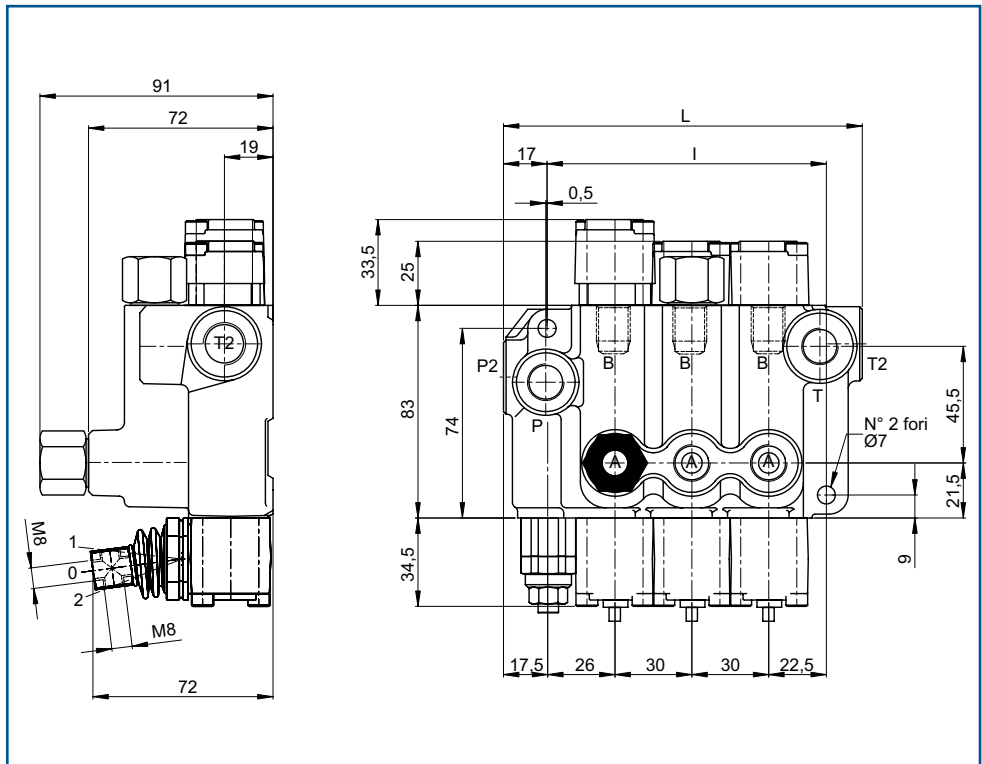


Valvola di blocco per sezione doppio effetto
Pilot operated check valves for double acting section

VBM



Valvola di blocco a sblocco meccanico
Pilot operated check valves with mechanical release



MOD	L	I	Kg
BB20/1*	76	50	1,8
BB20/2	106	80	2,9
BB20/3	136	110	4
BB20/4*	166	140	5
BB20/5*	196	170	6,1
BB20/6	226	200	7,2

*Disponibile per grosse quantità
Available for big quantity

FILETTATURA STANDARD - STANDARD THREADS

COD	A-B	P	T	P ₂	T ₂
G	1/4"	1/4"	3/8"	3/8"	3/8"
F	9/16" - 18	9/16" - 18	9/16" - 18	3/4" - 16	3/4" - 16

Su richiesta filettature diverse
Other threads available on request

