

Series MPDR and MPDR - PDMA damping rods are elements that are used to reduce the vibrations generated by the motor pump unit; realized with two steel plates and an intermediate element made of vulcanized rubber, they are available for mounting of electric motors according to normative UNEL-MEC, and for the mounting of the series of foot brackets PDMA series.

Available for electric motors **from 0,37 kW Gr. 71** to motors **200 kW Gr. 315**, they are able to reduce the noise level of about **3 ÷ 5 Db (A)**.

Technical specifications

Materials

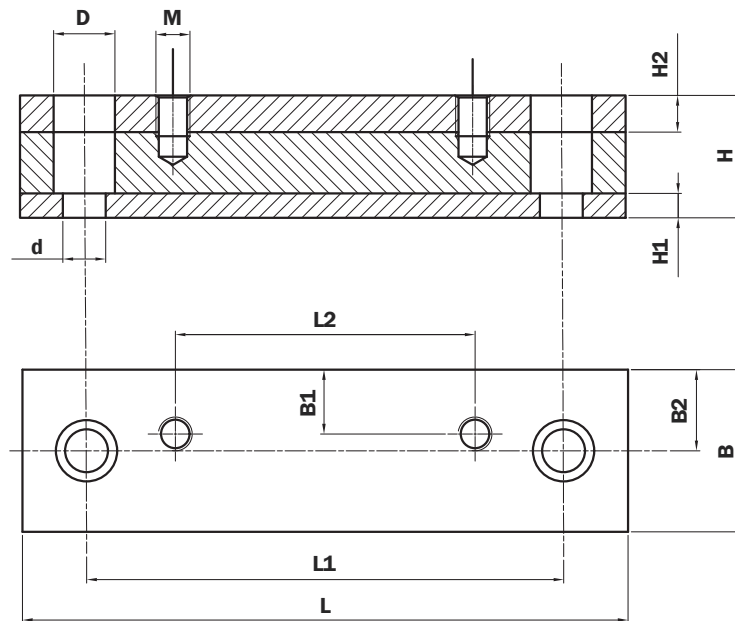
- Steel plates, painted black.
- Element in NBR 60 Sh.A
- Element polyurethane on request.

Temperature

- -20°C ÷ +80°C

Special Applications

- **Any applications not covered by the normal indications contained in this catalogue must be evaluated and approved by the MP Filtri Technical and Sales Department**



Damping rods for foot brackets PDMA series*

Code	L	L1	L2	B	B1	B2	H	H1	H2	D	d	M	Weight (kg)
MPDR PDMA160	196	156	80	50	21	25	40	8	12	20	14	M8	1,5
MPDR PDMA200	196	156	98	50	21	25	40	8	12	20	14	M10	1,5
MPDR PDMA250	240	205	130	50	24	25	40	8	12	20	14	M12	2,0
MPDR PDMA300	280	245	160	50	20	25	45	8	12	20	14	M12	2,5
MPDR PDMA350	446	400	279	70	35	35	60	15	15	26	14	M12	8,0

*For foot brackets see page 2

Damping rods for electrical motors UNEL-MEC

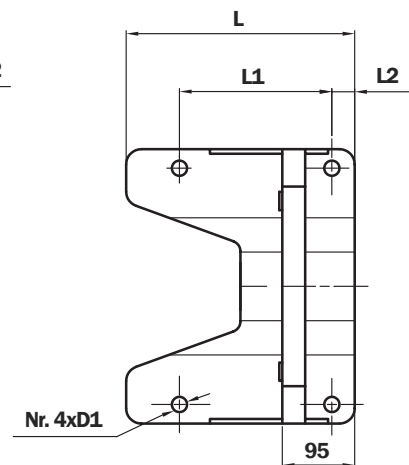
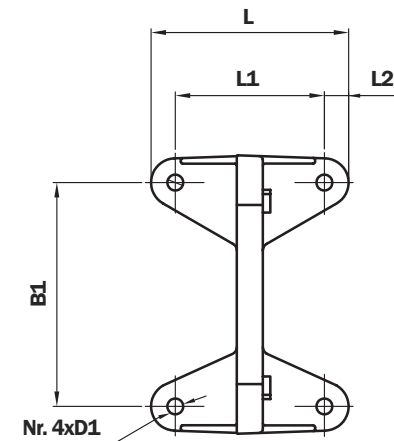
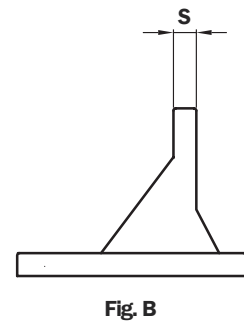
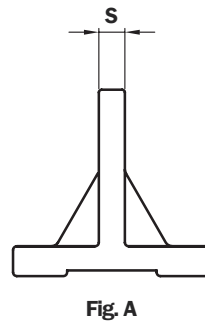
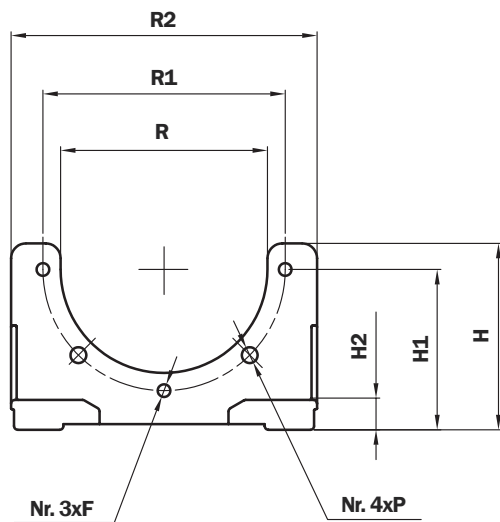
Code	L	L1	L2	B	B1	B2	H	H1	H2	D	d	M	Weight (kg)
MPDR 71			90		21							M6	1,5
MPDR 80	196	156	100		22								1,7
MPDR 90S					24,5		40						M8
MPDR 90L	240	205	125	50	24	25		8	12	20	14		2,0
MPDR 100L			140		22								2,0
MPDR 132S	280	245			20		45						M10
MPDR 132M			178										2,5
MPDR 160M	340	300	210		28								6,0
MPDR 160L			254										7,5
MPDR 180M	416	370	241							26	18	M12	7,5
MPDR 180L	446	400	279	70		35							8,0
MPDR 200L			305		35								8,9
MPDR 225S		430	286				60	15	15			M16	8,9
MPDR 225M	492		311										8,9
MPDR 250M		445	349										12,5
MPDR 280S			368	100	50	50				33	22	M20	15,1
MPDR 280M			419										15,1
MPDR 315S	614	570	406										26,5
MPDR 315M			457	120	60	60						M24	26,5
MPDR 315L	704	660	508										29,2

Made of pressure die-cast aluminium and featuring superior mechanical strength, these brackets are proportioned to support **UNEL - MEC** frame electric motors with **B5** mounting flange and no feet.

There are brackets available for a range of motors from **size 71, rated 0.37 kW**, up to **size 180 rated 22 kW**.

(For sizes other than those indicated in the table, contact the MP Filtri Technical and Sales Department).

As already indicated under the heading **“ASSEMBLY OF MOTOR AND PUMP UNIT”**, foot brackets of the **PDM** series should be fitted preferably in conjunction with anti-vibration mounts.



Foot bracket	Fig.	B	B1	R2	L	L1	L2	H	H1	H2	R	R1	S	P	D1	F	Weight (kg)
PDM A 160	A	160	135	180	106	80	13	100	86	16	111	130	14	8,5	8,5	M8	0,45
PDM A 200	A	200	175	207	128	98	21	128	115	14	146	165	14	11	11,5	M10	0,60
PDM A 250	A	250	220	262	172	130	21	157	145	18	191	215	16	13	13,5	M12	1,20
PDM A 300	A	300	270	320	210	160	25	188	170	18	235	265	20	13	13,5	M12	1,80
PDM A 350	B	350	310	360	300	200	30	220	200	30	261	300	30	18	13	M16	4,80