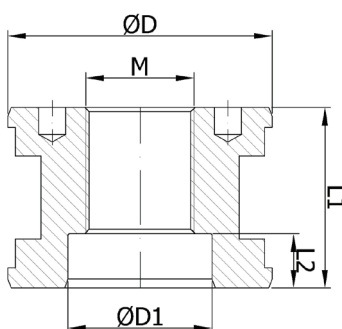


Tłok *Piston*

CHB

- Materiał stal FE 510
Material steel FE 510
- Ciśnienie robocze do 210 bar
Working pressure up to 210 bar



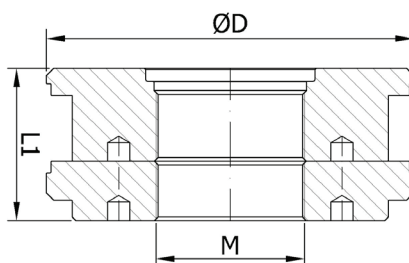
Dane techniczne *Technical data*

Kod <i>Code</i>	ØD	M	L1	L2	ØD1	Waga <i>Weight</i>
						Kg
CHB 32	32	M14 x 1,5	30	13	16	0,083
CHB 40	40	M16 x 1,5	31	13	20	0,139
CHB 50	50	M20 x 1,5	34	12	25	0,231
CHB 60	60	M24 x 1,5	40	12	32	0,464
CHB 63	63	M24 x 1,5	40	12	36	0,519
CHB 63D	63	M24 x 1,5	40	13	28	0,558
CHB 65	65	M24 x 1,5	42	12	32	0,641
CHB 70	70	M30 x 1,5	40	12	40	0,631
CHB 80	80	M30 x 1,5	48	13	40	1,151
CHB 90	90	M39 x 2	55	15	50	1,557
CHB 100	100	M39 x 2	62	22	50	2,125
CHB 100/TPM	100	M39 x 2	42	12	45	1,732
CHB 110	110	M45 x 2	62	22	60	2,55
CHB 125	125	M48 x 2	79	34	70	4,019
CHB 125/TPM	125	M48x2	60	15	70	3,543
CHB 140	140	M48 x 2	79	24	70	5,865
CHB 160	160	M52 x 2	80	15	80	8,412

Tłok *Piston*

CT11

- Materiał stal UNI C40
Material steel UNI C40
- Ciśnienie robocze do 210 bar
Working pressure up to 210 bar



Dane techniczne *Technical data*

Kod <i>Code</i>	Ø AL	MM	L	Waga <i>Weight</i>
				Kg
CT11180080	180	80 x 2	82	9,57
CT11200080	200	80 x 2	82	13,00
CT11250080	250	98 x 2	82	21,60