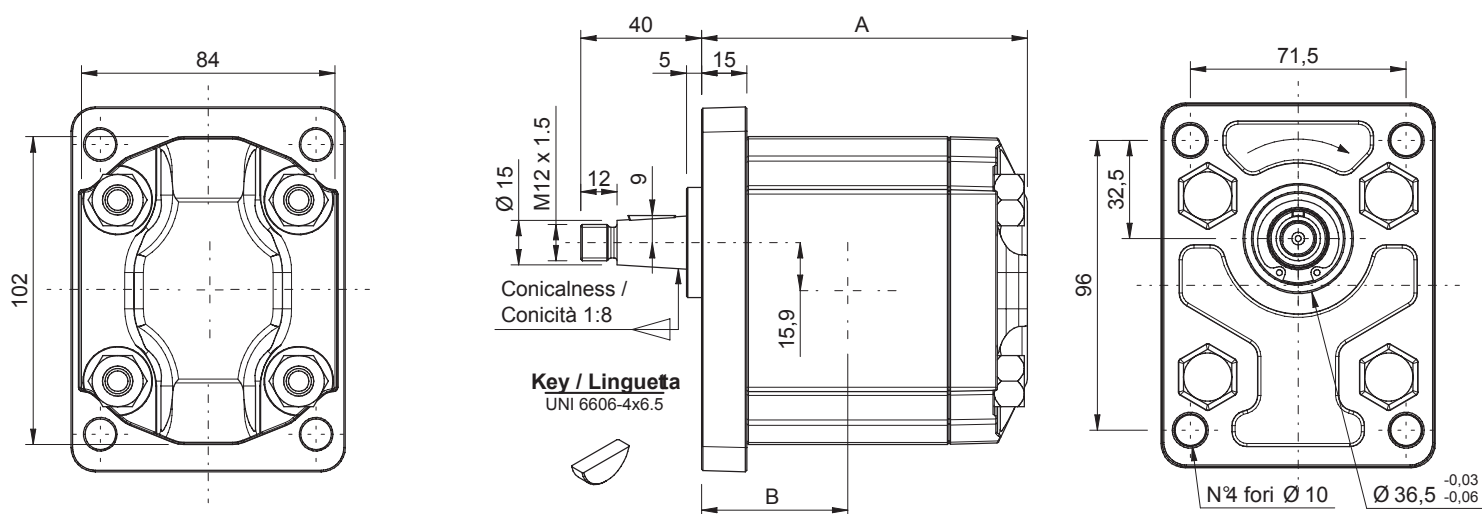


GR38 - Dimensional drawings / Disegni dimensionali

GR38 SHAFT AND FLANGE TYPES AND DIMENSIONS / TIPI DI ALBERO E FLANGIA E DIMENSIONI

Group 2 pumps / Pompe gruppo 2

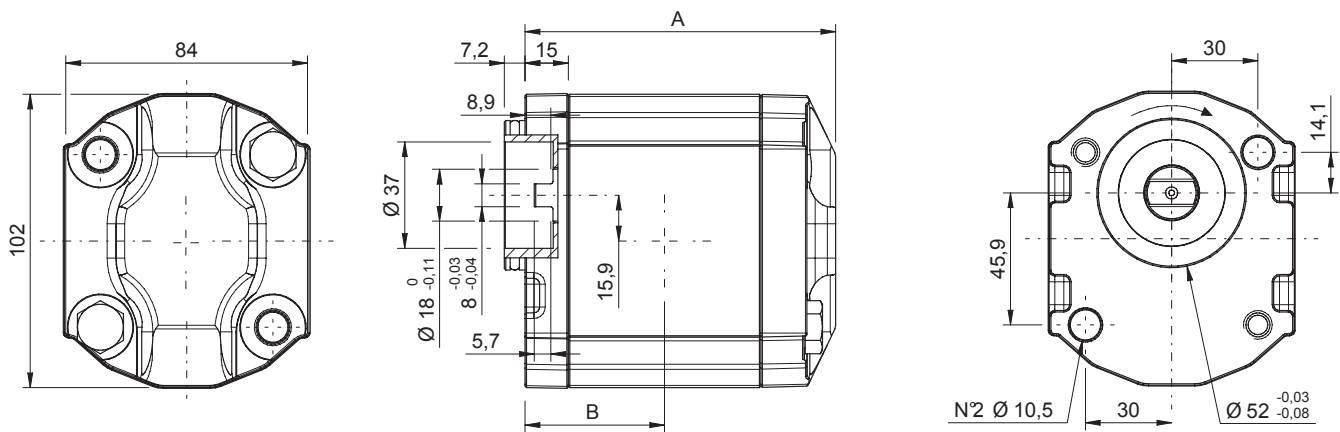
Type	Class	Flange & Shaft available types	Ports	Weight
GR38	2C	F2 AC4	Q-G-U	6 Kg
		F2BK7 AG		
		FSAEA AC		
		FSAEA AT9		
		FSAEA AT11		



GR38 - TYPE / TIPO F2 AC4								
Type Tipo	CC	L/min	Dimensions A Dimensioni A	Dimensions B Dimensioni B	Continuous Pressure Pressione continua	Intermittent Pressure Pressione intermittente (*)	Peak pressure Picco pressione (*)	Noise level Livello rumore
16	15,9	22,8	108	48,5	265	280	300	55
18	17,9	25,8	111	50	247	260	280	55
20	20	28,8	114	51,5	230	250	270	55
22	22,1	31,8	117	53	222	240	260	55
25	25,2	36,2	121,5	55,3	200	210	220	55
28	28,3	40,7	126	57,5	180	190	200	55

Max torque / Coppia max: 210 Nm

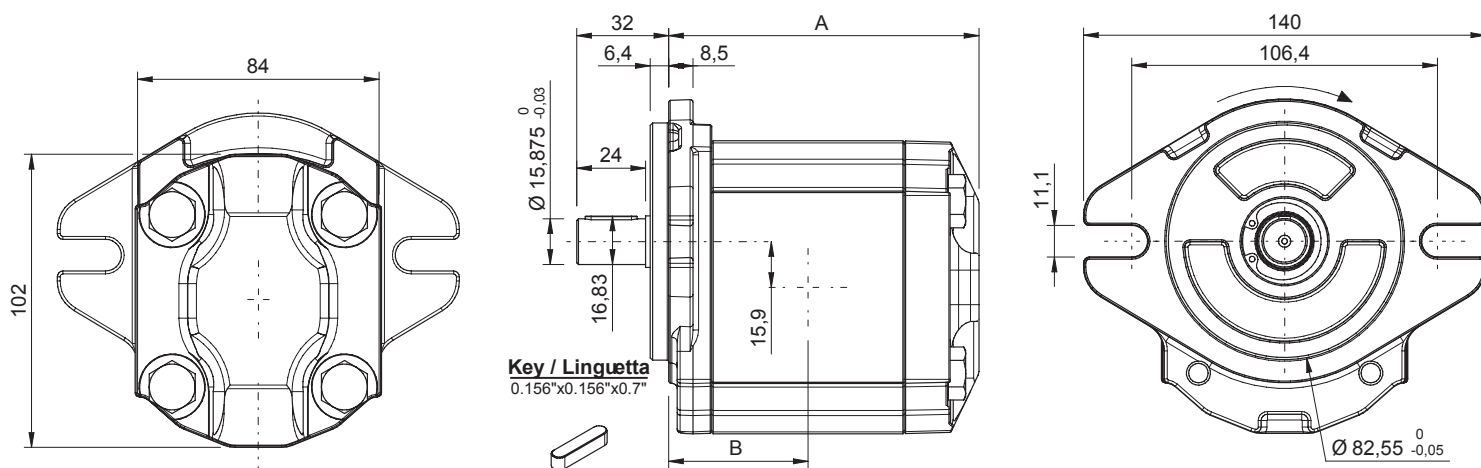
* Intermittent: cycle 20 sec. ON & 3 sec. OFF - Peak: cycle 1 sec. ON & 3 sec. OFF - Intermittente: ciclo 20 sec. ON & 3 sec. OFF - Picco: ciclo 1 sec. ON & 3 sec. OFF



GR38 - TYPE / TIPO F2BK7 AG

Type Tipo	CC	L/min	Dimensions A Dimensioni A	Dimensions B Dimensioni B	Continuous Pressure Pressione continua	Intermittent Pressure Pressione intermittente (*)	Peak pressure Picco pressione (*)	Noise level Livello rumore
16	15,9	22,8	108	48,5	265	280	300	55
18	17,9	25,8	111	50	247	260	280	55
20	20	28,8	114	51,5	230	250	260	55
22	22,1	31,8	117	53	210	230	240	55
25	25,2	36,2	121,5	55,3	200	210	220	55
28	28,3	40,7	126	57,5	180	190	200	55

Max torque / Coppia max: 110 Nm

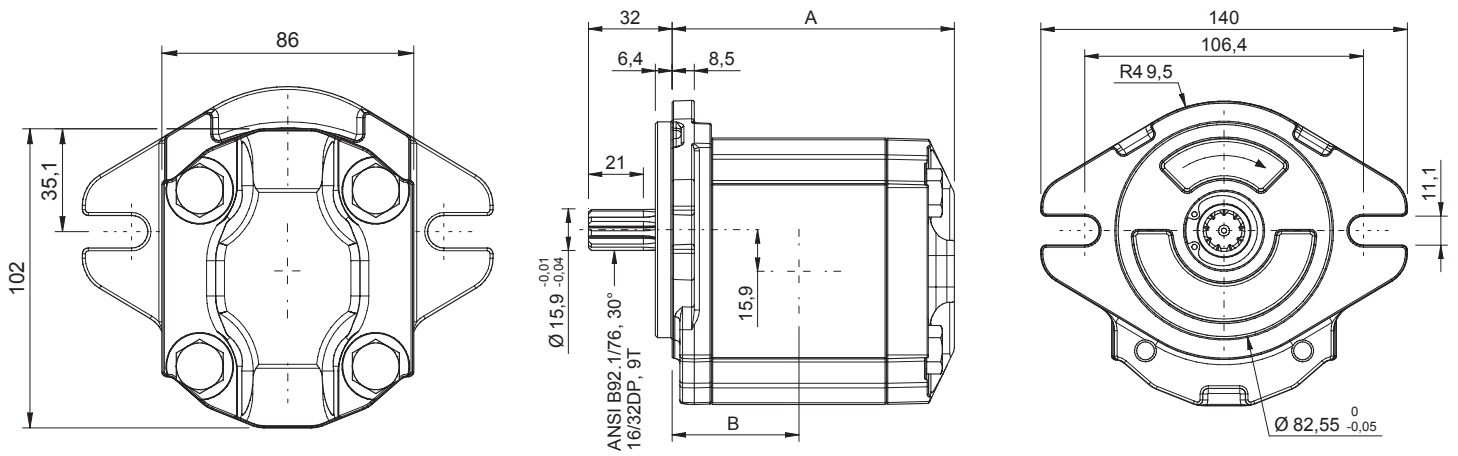


GR38 - TYPE / TIPO FSAEA AC

Type Tipo	CC	L/min	Dimensions A Dimensioni A	Dimensions B Dimensioni B	Continuous Pressure Pressione continua	Intermittent Pressure Pressione intermittente (*)	Peak pressure Picco pressione (*)	Noise level Livello rumore
16	15,9	22,8	108	48,5	265	280	300	55
18	17,9	25,8	111	50	247	260	280	55
20	20	28,8	114	51,5	230	250	270	55
22	22,1	31,8	117	53	222	240	260	55
25	25,2	36,2	121,5	55,3	200	210	220	55
28	28,3	40,7	126	57,5	180	190	200	55

Max torque / Coppia max: 140 Nm

* Intermittent: cycle 20 sec. ON & 3 sec. OFF - Peak: cycle 1 sec. ON & 3 sec OFF. Intermittente: ciclo 20 sec. ON & 3 sec. OFF - Picco: ciclo 1 sec. ON & 3 sec OFF

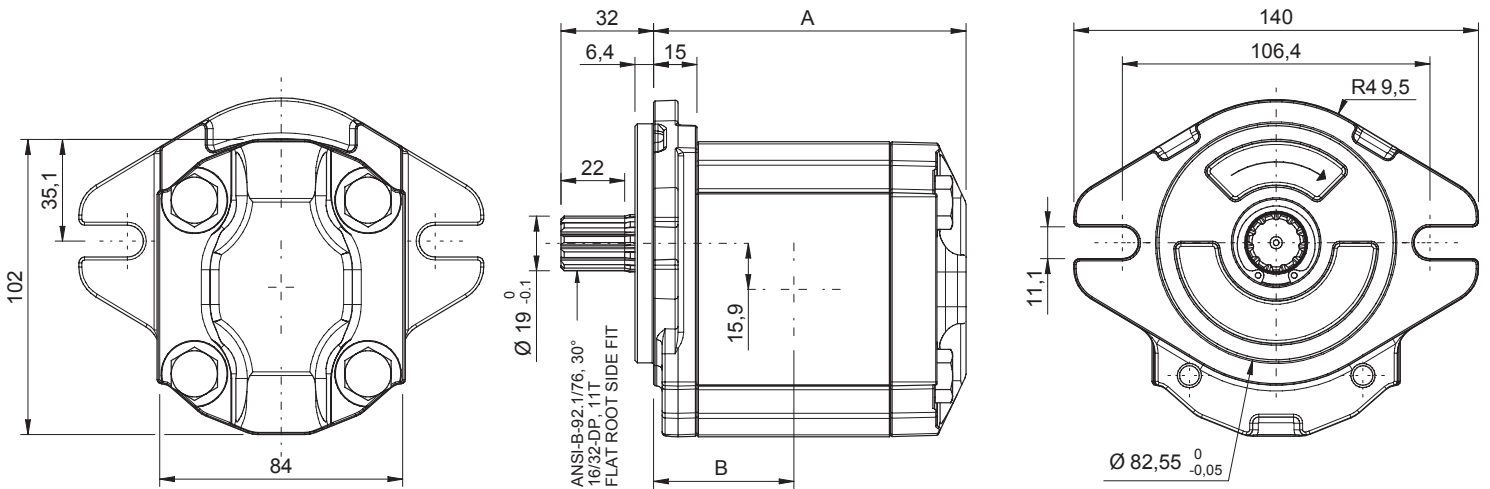


GR38 - TYPE / TIPO FSAEA AT9

Type Tipo	CC	L/min	Dimensions A Dimensioni A	Dimensions B Dimensioni B	Continuous Pressure Pressione continua	Intermittent Pressure Pressione intermittente (*)	Peak pressure Picco pressione (*)	Noise level Livello rumore
16	15,9	22,8	108	48,5	265	280	300	55
18	17,9	25,8	111	50	247	260	280	55
20	20	28,8	114	51,5	230	250	270	55
22	22,1	31,8	117	53	222	240	260	55
25	25,2	36,2	121,5	55,3	200	210	220	55
28	28,3	40,7	126	57,5	180	190	200	55

Max torque / Coppia max: 190 Nm

* Intermittent: cycle 20 sec. ON & 3 sec. OFF - Peak: cycle 1 sec. ON & 3 sec OFF. Intermittente: ciclo 20 sec. ON & 3 sec. OFF - Picco: ciclo 1 sec. ON & 3 sec OFF



GR38 - TYPE / TIPO FSAEA AT11

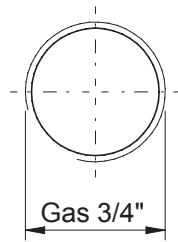
Type Tipo	CC	L/min	Dimensions A Dimensioni A	Dimensions B Dimensioni B	Continuous Pressure Pressione continua	Intermittent Pressure Pressione intermittente (*)	Peak pressure Picco pressione (*)	Noise level Livello rumore
16	15,9	22,8	108	48,5	265	280	300	55
18	17,9	25,8	111	50	247	260	280	55
20	20	28,8	114	51,5	230	250	270	55
22	22,1	31,8	117	53	222	250	270	55
25	25,2	36,2	121,5	55,3	208	250	270	55
28	28,3	40,7	126	57,5	197	250	270	55

Max torque / Coppia max: 210 Nm

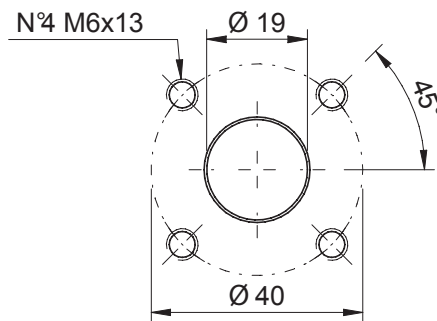
* Intermittent: cycle 20 sec. ON & 3 sec. OFF - Peak: cycle 1 sec. ON & 3 sec OFF. Intermittente: ciclo 20 sec. ON & 3 sec. OFF - Picco: ciclo 1 sec. ON & 3 sec OFF

INLET OUTLET PORTS / PORTE DI ASPIRAZIONE E MANDATA (Suction / Pressure)

Type G / Tipo G

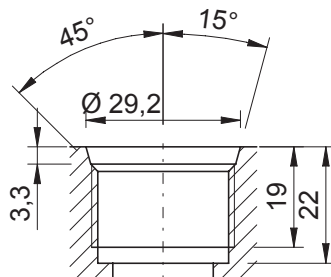


Type Q / Tipo Q

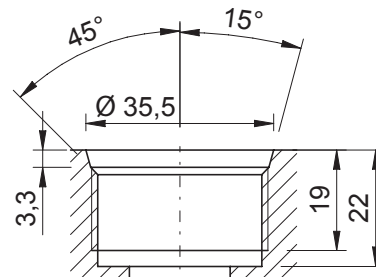


UNF INLET OUTLET PORTS / PORTE DI ASPIRAZIONE E MANDATA UNF - **Type U / Tipo U**

Suction port type U

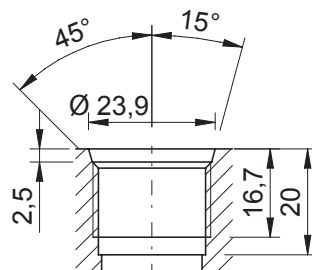


**SAE O-Ring Port 12 thread
 ANSI B1.1 1 1/16 UN-2B**

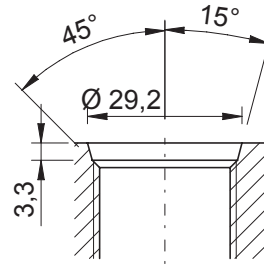


**SAE O-Ring Port 16 thread
 ANSI B1.1 5/16 12UN-2B**

Pressure port type U



**SAE O-Ring Port 10 thread
 ANSI B1.1 7/8 14 UNF-2B**



**SAE O-Ring Port 12 thread
 ANSI B1.1 1 1/16 UN-2B**

Suction/Pressure UNF ports possible configuration
 Possibili combinazioni porte di aspirazione/mandata di tipo UNF

Pump	Suction port	Pressure port
16 cc	SAE O-Ring port 12	SAE O-Ring port 10
18 cc	SAE O-Ring port 16	SAE O-Ring port 12
20 cc	SAE O-Ring port 16	SAE O-Ring port 12
22 cc	SAE O-Ring port 16	SAE O-Ring port 12
25 cc	SAE O-Ring port 16	SAE O-Ring port 12
28 cc	SAE O-Ring port 16	SAE O-Ring port 12