

Made from pressure die-cast aluminium, the foot brackets are designed to fit **UNEL-MEC B5** electric motors without feet. They suit a wide range of electric motors from **0.37 kW (size 71)** to **22 kW (size 180)**. For other motors, please contact our technical sales department.

As specified in the paragraph "**MOTOR PUMP ASSEMBLY**", it is advisable to fit the foot brackets of the **PDM** series in conjunction with damping elements.

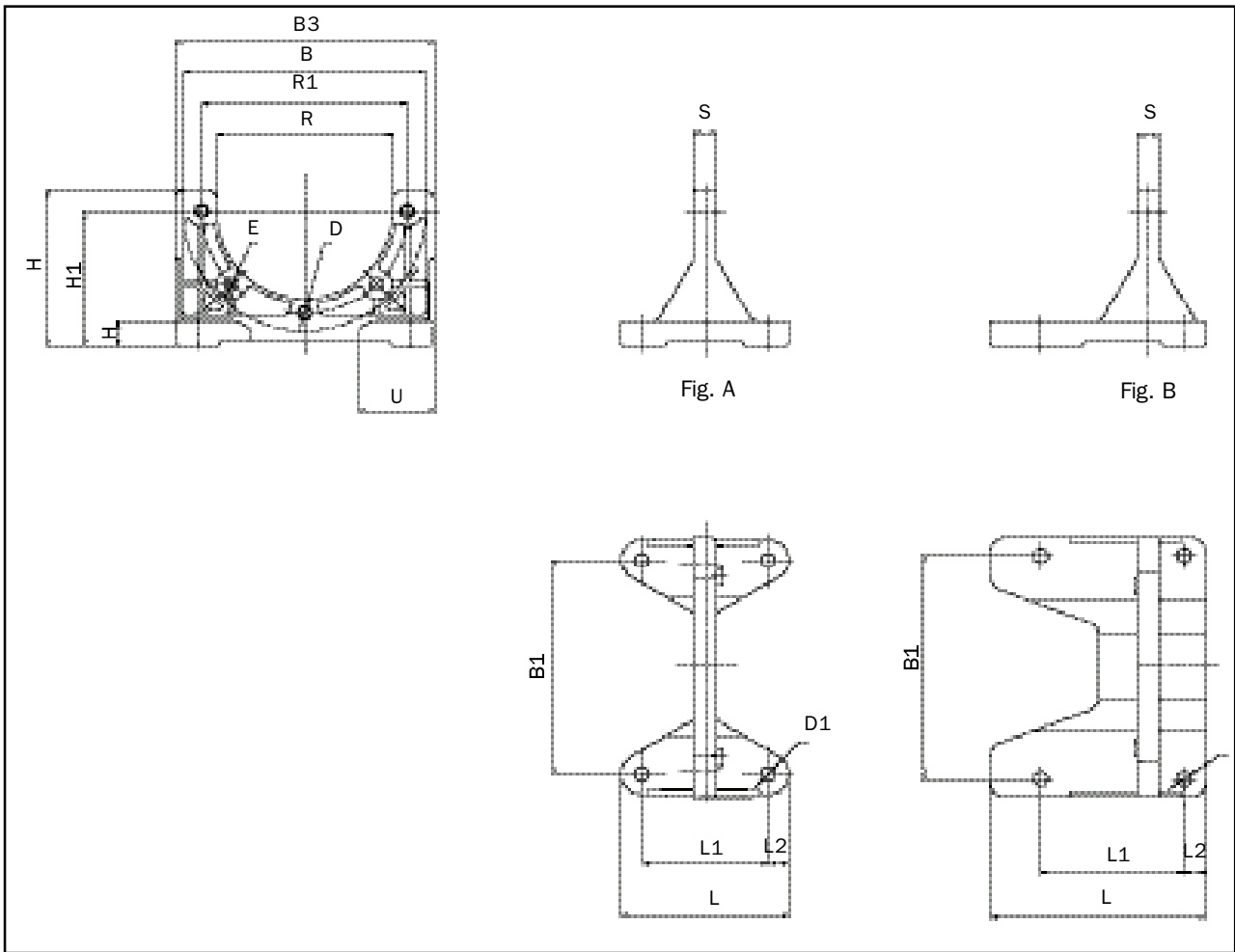


CHART 19

Foot bracket	Fig.	B	B1	B3	L	L1	L2	H	H1	H4	R	R1	S	U	e	D1	d	N
PDM A 160	A	160	135	180	106	80	13	100	86	16	111	130	14	40	8,5	8,5	M8	-
PDM A 200	A	200	175	217	140	98	21	128	115	14	146	165	14	42	11	11	M10	-
PDM A 250	A	250	220	262	172	130	21	157	145	18	191	215	16	42	13	13	M12	-
PDM A 300	A	300	270	320	210	160	25	188	170	18	235	265	20	50	13	13	M12	-
PDM A 350	B	350	310	360	300	200	30	220	200	30	261	300	30	135	18	13	M16	35

- Weight PDM A 160** - 450 g.
- PDM A 200** - 600 g.
- PDM A 250** - 1200 g.
- PDM A 300** - 1800 g.
- PDM A 350** - 4800 g.