

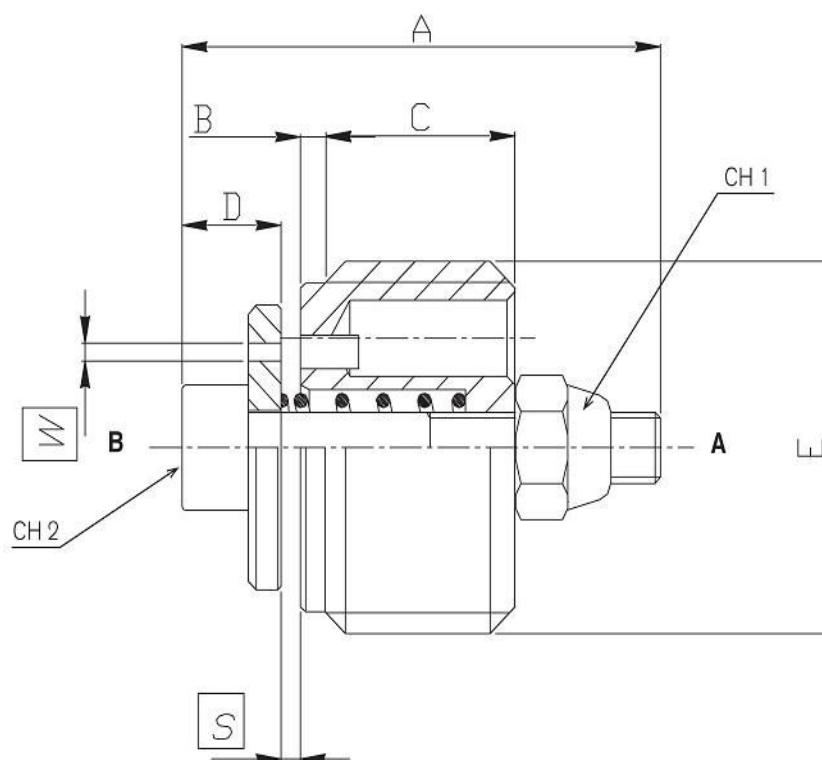


**Caratteristiche - Hydraulic characteristics**

Dimensione/Dimension		01	015	02	03	04	05
Pressione max/Max Pressure	bar	350	350	350	350	350	350
Portata max/Max Flow Rate	l/min	29	29	45	67	169	223
Portata standard/Standard Flow Rate	l/min	18	18	35,5	60	149	190
Apertura S standard/Standard Setting "S"		0.8	0.8	1.5	1.8	2.2	2.6

N.B.: per l'utilizzo di altri parametri vogliate consultarci

Note: if application needs other/specific parameters or measures please contact us


**Dimensioni e pesi - External dimensions and weights**

Dimensione/Dimension	A	B	C	D	E GAS	E SAE	CH1	CH2	Peso Weight Kg
<b>01</b>	19	1	7	5	1/4		5.5	2.5	0.010
<b>015</b>	19	1	7	5		9/16-18	5.5	2.5	0.010
<b>02</b>	23	1.5	9.5	5	3/8	3/4-16	5.5	2.5	0.015
<b>03</b>	29	1.5	11.5	6	1/2	7/8-14	7	3	0.025
<b>04</b>	34	2.5	15.5	6	3/4	1 1/16-12	7	3	0.045
<b>05</b>	40	1.5	18.5	8.5	1	1 5/16-12	8	4	0.098

NOTA: il valore di registrazione S deve essere 1.5-2 volte il valore della portata massima di discesa.

NOTE: the setting of "S" is recommended to be 1.5 - 2 times the maximum descent flow.